



**India Meteorological Department  
(Ministry of Earth Sciences)**

**NATIONAL BULLETIN NO. 4 (LAND/01/2024)**

**TIME OF ISSUE:1315 HOURS IST**

**DATED:03.08.2024**

**FROM: INDIA METEOROLOGICAL DEPARTMENT (FAX NO. 24643965/24699216/24623220)**

**TO: CONTROL ROOM, NDM, MINISTRY OF HOME AFFAIRS (FAX.NO. 23093750)**

**CONTROL ROOM NDMA (FAX.NO. 26701729)**

**CABINET SECRETARIAT (FAX.NO.23012284, 23018638)**

**PS TO HON'BLE MINISTER FOR S & T AND EARTH SCIENCES (FAX NO.23316745)**

**SECRETARY, MOES (FAX NO. 24629777)**

**H.Q. (INTEGRATED DEFENCE STAFF AND CDS) (FAX NO. 23005137/23005147)**

**DIRECTOR GENERAL, DOORDARSHAN (23385843)**

**DIRECTOR GENERAL, AIR (23421105, 23421219)**

**PIB MOES (FAX NO. 23389042)**

**UNI (FAX NO. 23355841)**

**D.G. NATIONAL DISASTER RESPONSE FORCE (NDRF) (FAX NO. 26105912, 2436 3260)**

**DIRECTOR, PUNCTUALITY, INDIAN RAILWAYS (FAX NO. 23388503)**

**CHIEF SECRETARY, WEST BENGAL (FAX NO. 033-22144328)**

**CHIEF SECRETARY, JHARKHAND (FAX NO. 0651-2400255)**

**CHIEF SECRETARY, CHHATTISGARH (FAX NO. 0771-2221206)**

**CHIEF SECRETARY, BIHAR (FAX NO. 0612-2217085)**

**CHIEF SECRETARY, MADHYA PRADESH (FAX NO. 0755-2441076)**

**CHIEF SECRETARY, UTTAR PRADESH (FAX NO.0522-2239283)**

**CHIEF SECRETARY, RAJASHTHAN (FAX NO. 0141-2227114)**

**CHIEF SECRETARY, GUJARAT (FAX NO. 079-23250305)**

**Sub: (A) Deep Depression over southwest Bihar and adjoining northwest Jharkhand**

**(B) Low Pressure Area over southwest Rajasthan & neighbourhood**

**(A) Deep Depression over southwest Bihar and adjoining northwest Jharkhand**

The depression over north Jharkhand and neighbourhood moved west-northwestwards with a speed of 7 kmph during past 6 hours, intensified into a deep depression and lay centered at 0830 hours IST of today, the 3<sup>rd</sup> August over southwest Bihar and adjoining northwest Jharkhand near latitude 24.4°N and longitude 84.4°E, about 50 km northeast of Daltonganj (Jharkhand), 60 km south-southeast of Dehri (Bihar) and 140 km east-southeast of Churk (Uttar Pradesh).

It is likely to continue to move west-northwestwards across northwest Jharkhand, southwest Bihar, southeast Uttar Pradesh and east Madhya Pradesh during next 48 hours.

**(B) Low Pressure Area over southwest Rajasthan and neighbourhood**

A low pressure area formed over southwest Rajasthan and neighbourhood at 0830 hours IST of today, the 3<sup>rd</sup> August, 2024. It is likely to move nearly westwards during next 24 hours.

## **Warnings:**

### **(i) Rainfall Warning:**

#### **Jharkhand:**

Light to moderate rainfall at most places with **heavy to very heavy rainfall** at a few places is very likely on 3<sup>rd</sup> and isolated **extremely heavy rainfall** is also very likely over Northwest Jharkhand on 3<sup>rd</sup>; heavy rainfall at isolated places on 4<sup>th</sup> August.

#### **.Bihar:**

Light to moderate rainfall at most places with **heavy to very heavy rainfall** at isolated places over Bihar on 3<sup>rd</sup> and 6<sup>th</sup>, heavy rainfall at isolated places on 4<sup>th</sup> & 5<sup>th</sup> August.

#### **Chhattisgarh:**

Light to moderate rainfall at most places with **heavy to very heavy rainfall** at a few places and **extremely heavy rainfall** at isolated places also over north Chhattisgarh is very likely on 3<sup>rd</sup> August.

#### **East Madhya Pradesh:**

Light to moderate rainfall at most places with **heavy to very heavy rainfall** at isolated places is very likely on 3<sup>rd</sup> & 4<sup>th</sup> and **extremely heavy rainfall** at isolated places is also very likely on 3<sup>rd</sup> August.

#### **West Madhya Pradesh:**

Light to moderate rainfall at most places is very likely with **heavy to very heavy rainfall** at isolated places is very likely during 3<sup>rd</sup> to 5<sup>th</sup> and **extremely heavy rainfall** at isolated places is also very likely on 3<sup>rd</sup> and 4<sup>th</sup> August.

#### **East Uttar Pradesh:**

Light to moderate rainfall at many places with **heavy to very heavy rainfall** at a few places and **extremely heavy rainfall** at isolated places over southeast Uttar Pradesh is very likely on 3<sup>rd</sup> and 4<sup>th</sup> August.

#### **West Uttar Pradesh:**

Light to moderate rainfall at many places with heavy to very heavy rainfall at isolated places is very likely on 3<sup>rd</sup> and isolated heavy on 4<sup>th</sup>.

#### **East Rajasthan:**

Light to moderate rainfall at most places with heavy rainfall at isolated places is very likely during 3<sup>rd</sup> to 6<sup>th</sup>; very heavy rainfall at isolated places on 3<sup>rd</sup> and **extremely heavy rainfall** is very likely on 4<sup>th</sup> August

#### **West Rajasthan:**

Light to moderate rainfall at most places with heavy to very heavy rainfall at isolated places is very likely during 3<sup>rd</sup>, 5<sup>th</sup> and 6<sup>th</sup> and heavy rainfall at isolated places on 4<sup>th</sup> August

#### **Gujarat region :**

Light to moderate rainfall at most places with heavy to very heavy rainfall at isolated on 3<sup>rd</sup> and 4<sup>th</sup> and extremely heavy rainfall at isolated places on 3<sup>rd</sup>.

#### **Saurashtra & Kutch.**

Light to moderate rainfall at most places with heavy to very heavy rainfall at isolated on 3<sup>rd</sup> and heavy rainfall on 4<sup>th</sup> August..

#### **West Bengal:**

Light to moderate rainfall at most places with **heavy to very heavy rainfall** at isolated places is very likely over Sub-Himalayan West Bengal during 3<sup>rd</sup> to 6<sup>th</sup> August.

Light to moderate rainfall at most places with isolated **heavy rainfall** is very likely over Gangetic West Bengal on 3<sup>rd</sup> August.

## **(ii) Wind warning:**

- Strong wind speed reaching 45-55 kmph gusting to 65 kmph is very likely over Jharkhand, south Bihar, north Chhattisgarh and adjoining and east Madhya Pradesh & southeast Uttar Pradesh on 3<sup>rd</sup> August.
- Strong wind speed reaching 45-55 kmph gusting to 65 kmph is very likely over south Uttar Pradesh, East Madhya Pradesh and adjoining west Madhya Pradesh & north Chhattisgarh, on 4<sup>th</sup> August.
- Strong wind speed reaching 40-50 kmph gusting to 60 kmph is very likely over west Madhya Pradesh and adjoining east Rajasthan & east Madhya Pradesh on 5<sup>th</sup> August.

## **(iii) Impact Expected**

- Localized Flooding of roads, water logging in low lying areas and closure of underpasses mainly in urban areas of the above region.
- Occasional reduction in visibility due to heavy rainfall.
- Disruption of traffic in major cities due to water logging in roads leading to increased travel time.
- Minor damage to kutchha roads.
- Possibilities of damage to vulnerable structure.
- Localized Landslides/Mudslides/landslips/mud slips/land sinks/mud sinks.
- Damage to horticulture and standing crops in some areas due to inundation.
- It may lead to riverine flooding in some river catchments (for riverine flooding please visit Web page of CWC)

## **(iv) Action Suggested**

- Check for traffic congestion on your route before leaving for your destination.
- Follow any traffic advisories that are issued in this regard.
- Avoid going to areas that face the water logging problems often.
- Avoid staying in vulnerable structure.

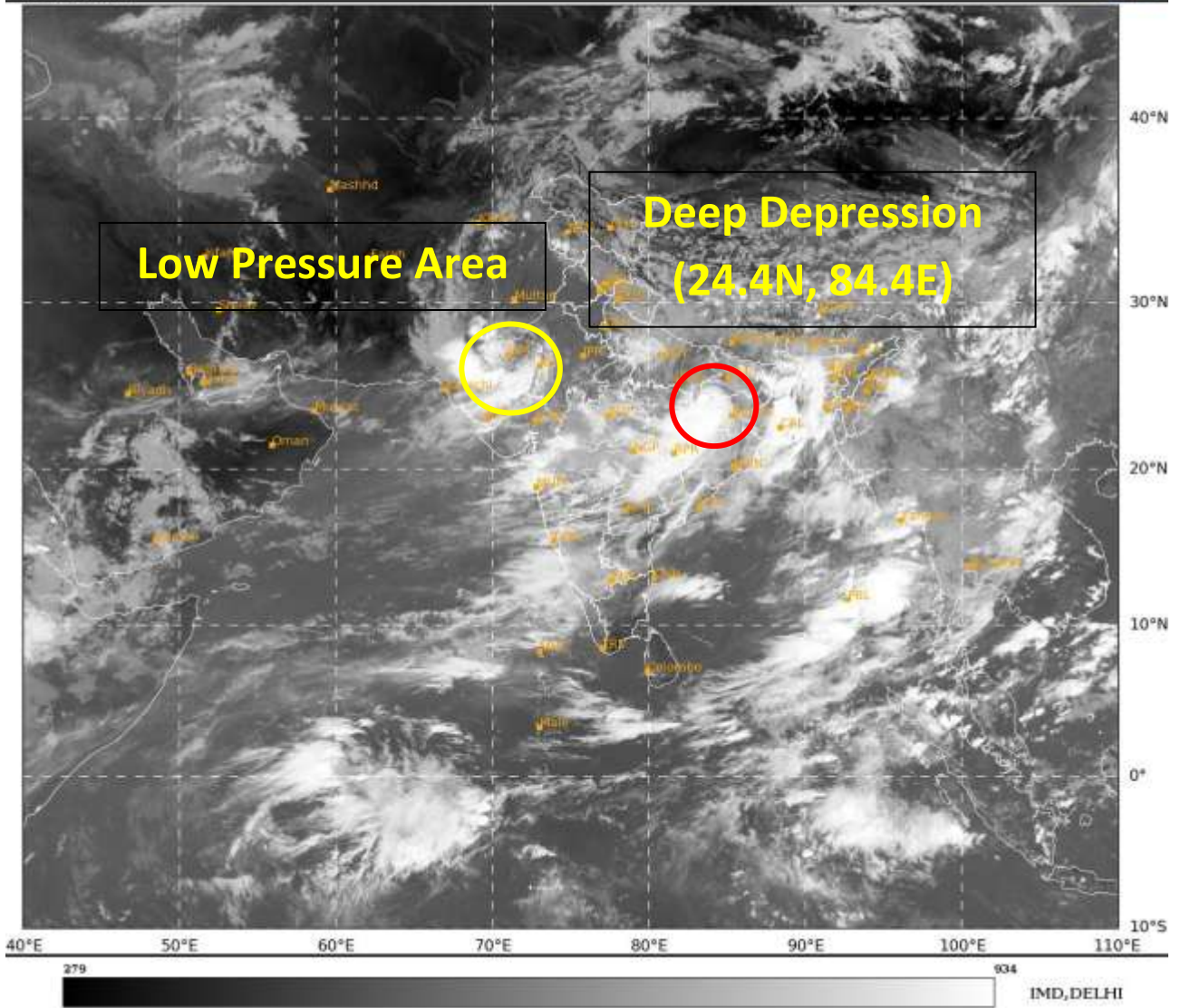
## **(v) Agromet advisories for Heavy Rainfall likely over various parts of the country**

- Make provision for draining out excess water from crop fields to avoid water stagnation in West Bengal, Sub Himalayan West Bengal, Odisha, Jharkhand, Bihar, Rajasthan, Madhya Pradesh, Chhattisgarh.
- Provide mechanical support to horticultural crops and staking to vegetables.

**Next bulletin will be issued at 1430 hours IST of today, the 3<sup>rd</sup> August, 2024.**

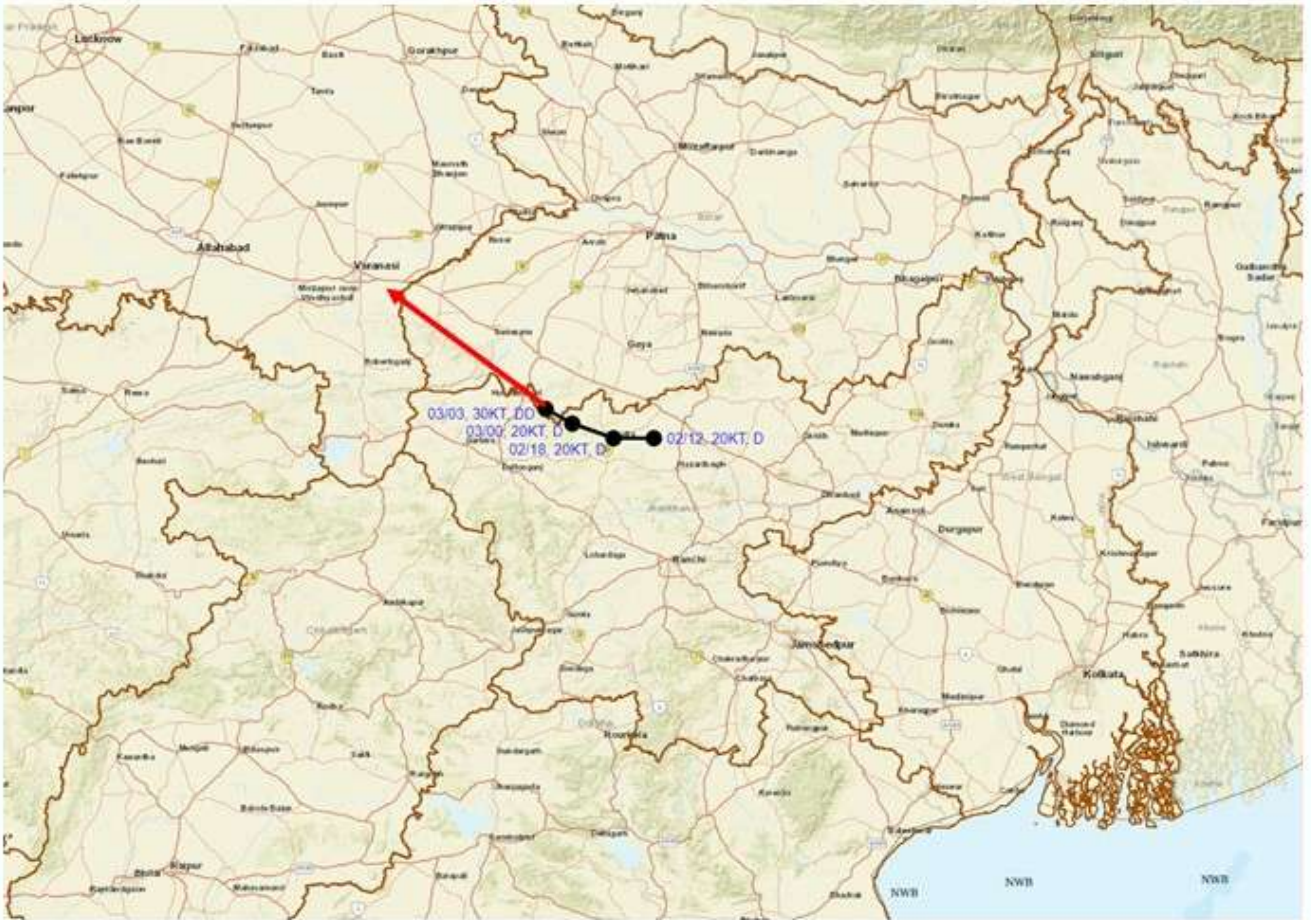
**(Ananda Kumar Das)**  
**Scientist F, Cyclone Warning Division, New Delhi**

*Copy to: ACWC Kolkata/RMC, New Delhi/RMC, Nagpur/MC, Ranch/MC, Raipur/MC, Patna/MC, Bhopal/MC, Jaipur/CWC Bhubaneswar/MC, Lucknow*





**OBSERVED AND FORECAST TRACK OF DEEP DEPRESSION OVER SOUTHWEST BIHAR AND ADJOINING NORTHWEST JHARKHAND BASED ON 0300 UTC OF 03<sup>RD</sup> AUGUST, 2024.**



DATE/TIME IN UTC

IST=UTC + 0530

L: LOW PRESSURE AREA

WML: WELL MARKED LOW PRESSURE AREA

D: DEPRESSION (17-27 KT)

DD: DEEP DEPRESSION (28-33 KT)

CS: CYCLONIC STORM (34-47 KT)

SCS: SEVERE CYCLONIC STORM (48-63KT)

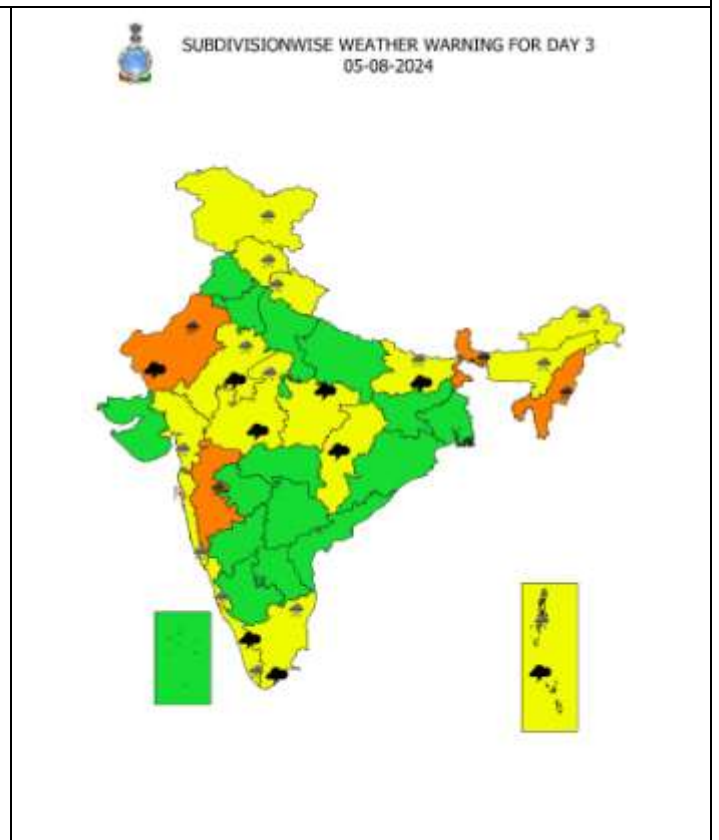
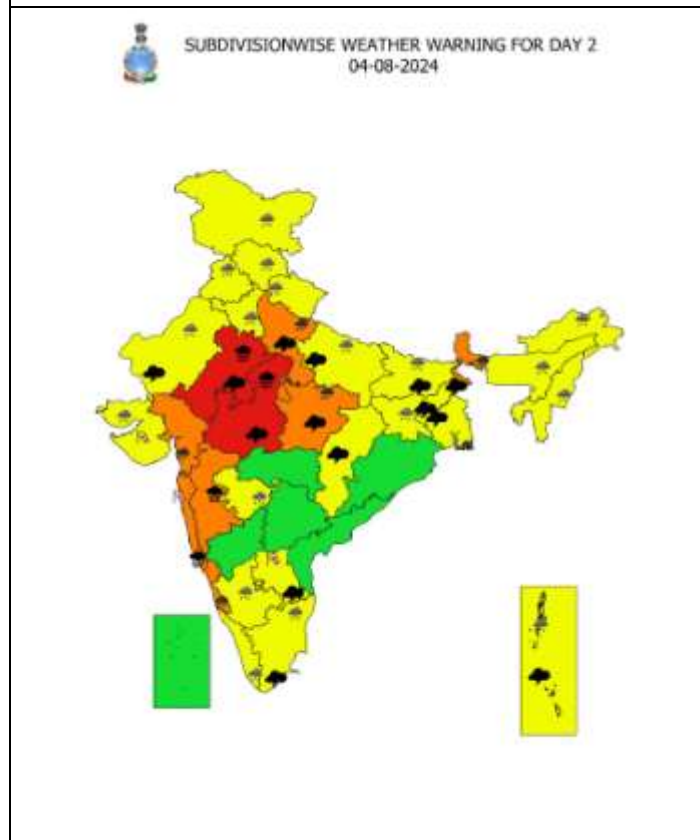
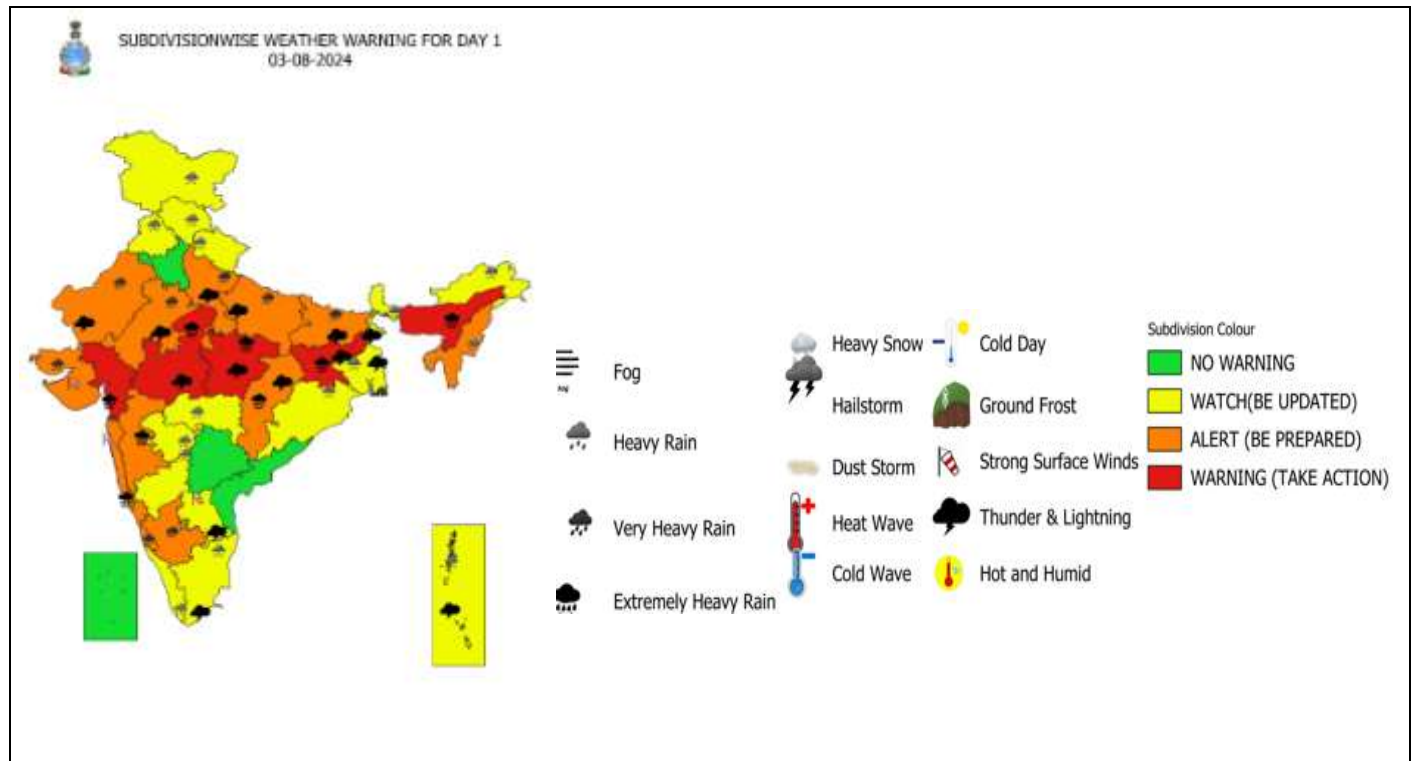
VSCS: VERY SEVERE CYCLONIC STORM (64-89 KT)

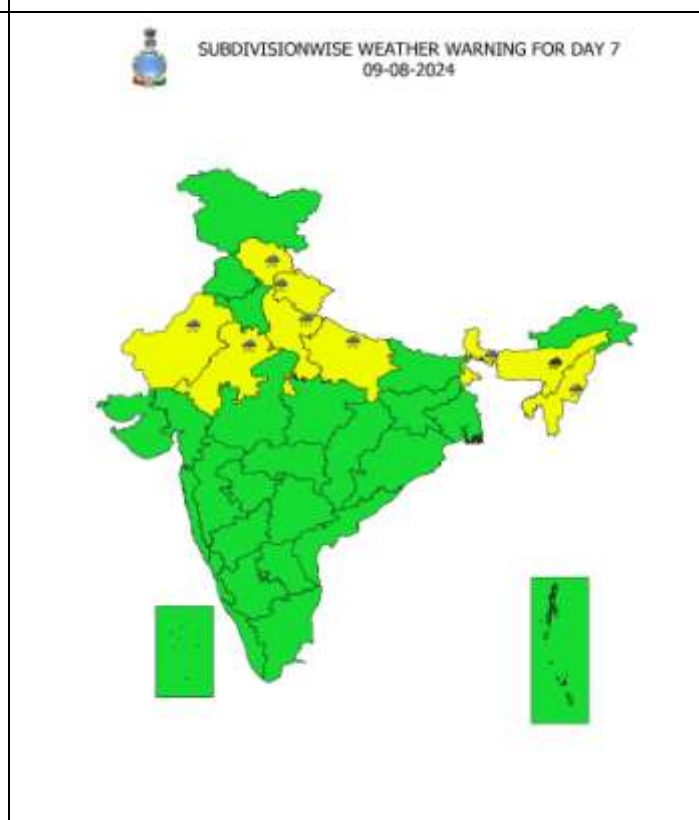
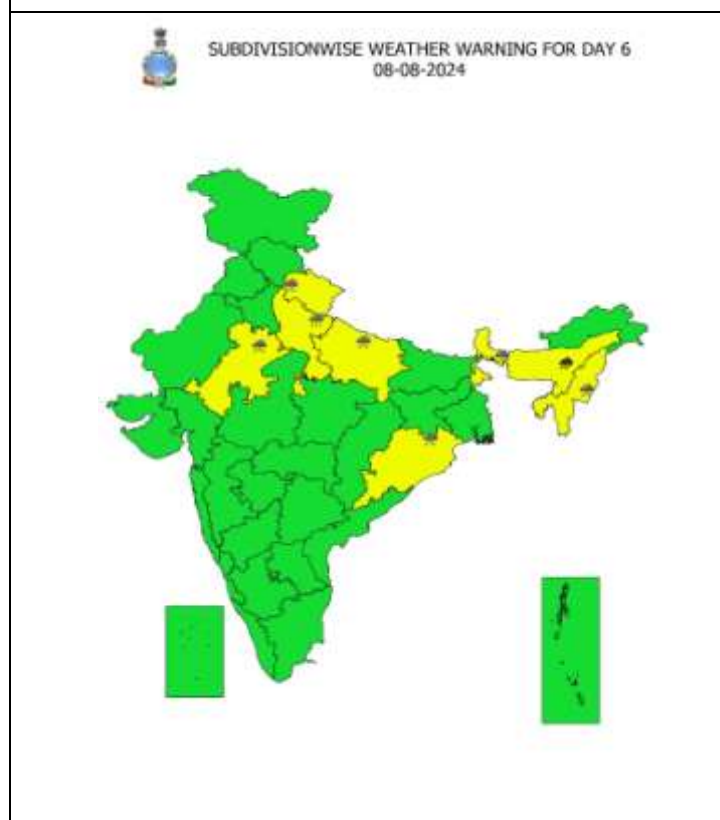
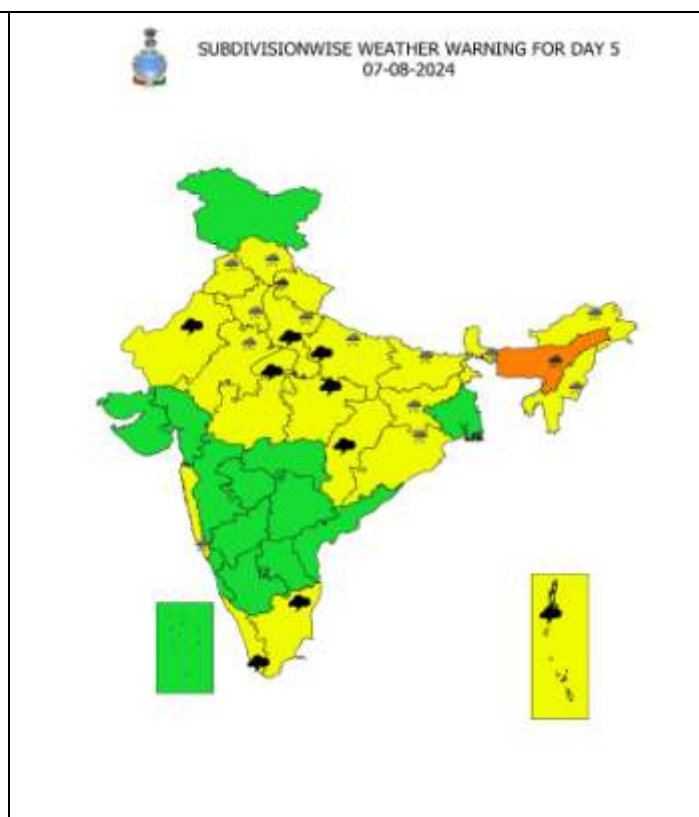
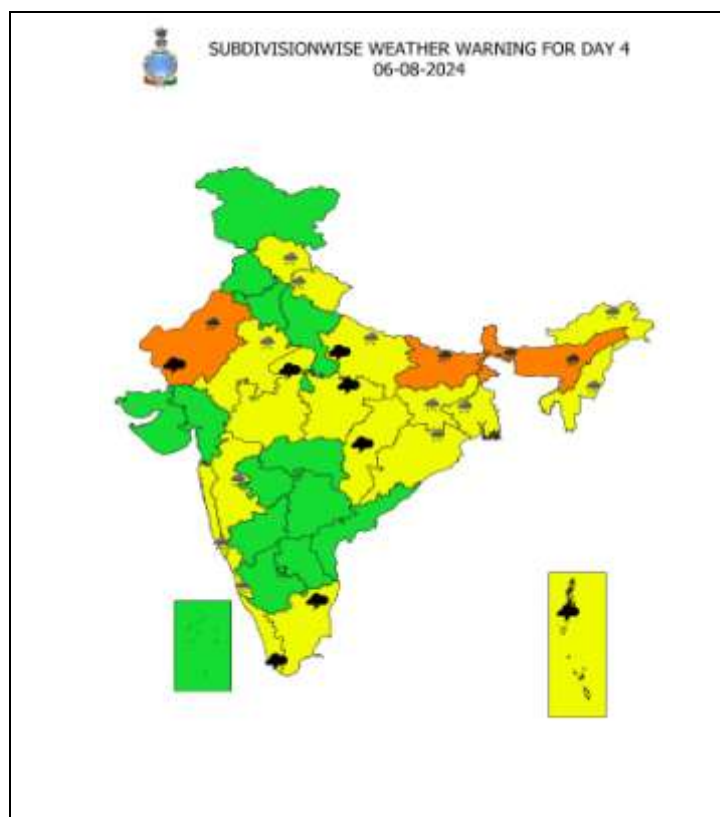
ESCS: EXTREMELY SEVERE CYCLONIC STORM (90-119 KT)

SuCS: SUPER CYCLONIC STORM ( $\geq$  120 KT)

-  LESS THAN 34 KT
-  34-47 KT
-   $\geq$  48 KT
-  OBSERVED TRACK
-  FORECAST TRACK
-  CONE OF UNCERTAINTY

# Warning Graphics





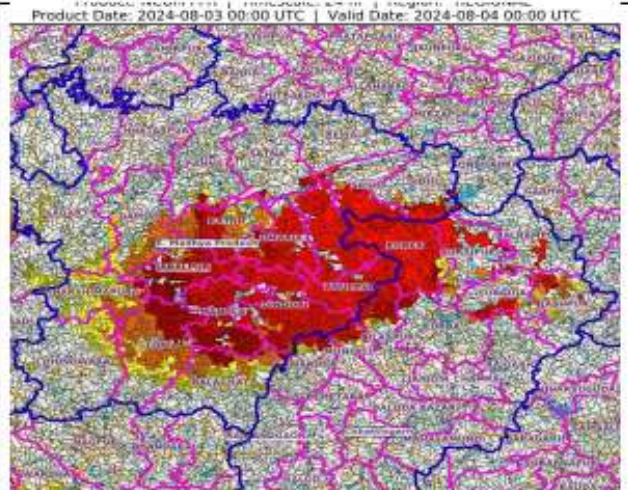
- Action may be taken based on **ORANGE AND RED** COLOUR warnings.
- Vulnerable regions likely urban and hilly areas action may be initiated for heavy rainfall warning.
- As the lead period increases forecast accuracy decreases.

## Flash Flood Guidance

### **24 hours Outlook for the Flash Flood Risk (FFR) till 0530 IST of 04-08-2024 :**

**Low to Moderate flash flood risk** likely over few watersheds & neighbourhoods of **East Madhya Pradesh adjoining Northern parts of Chhattisgarh** and Met Sub-divisions during next 24 hours.

Surface runoff/ Inundation may occur at some fully saturated soils & low-lying areas over AoC as shown in map due to expected rainfall occurrence in next 24 hours.



### **24 hours Outlook for the Flash Flood Risk (FFR) till 0530 IST of 04-08-2024 :**

**Low to Moderate flash flood risk** likely over few watersheds & neighbourhoods of **South Gujarat Region and Northern parts of Madhya Maharashtra** Met Sub-divisions during next 24 hours.

Surface runoff/ Inundation may occur at some fully saturated soils & low-lying areas over AoC as shown in map due to expected rainfall occurrence in next 24 hours.

